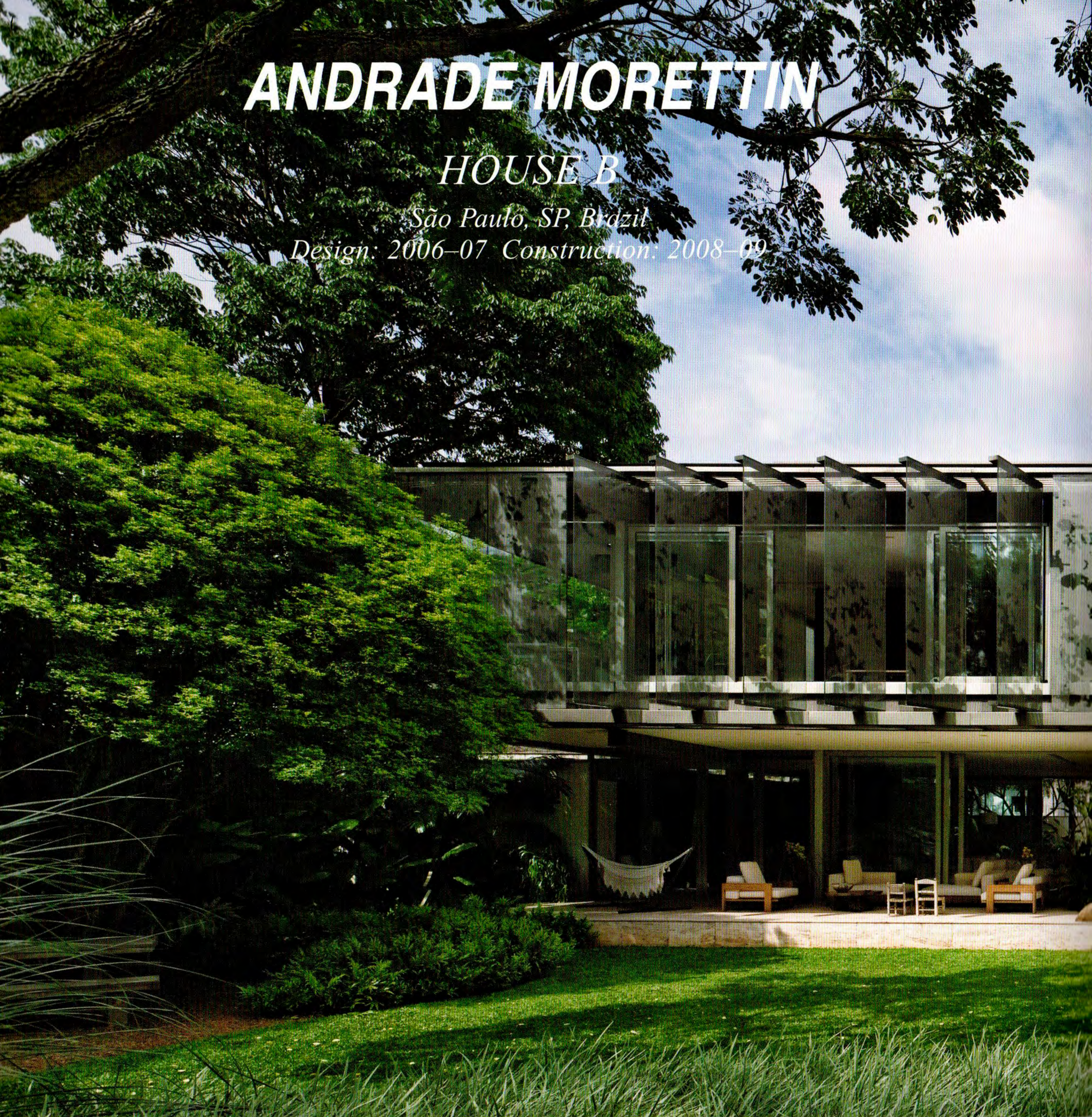


ANDRADE MORETTIN

HOUSE B

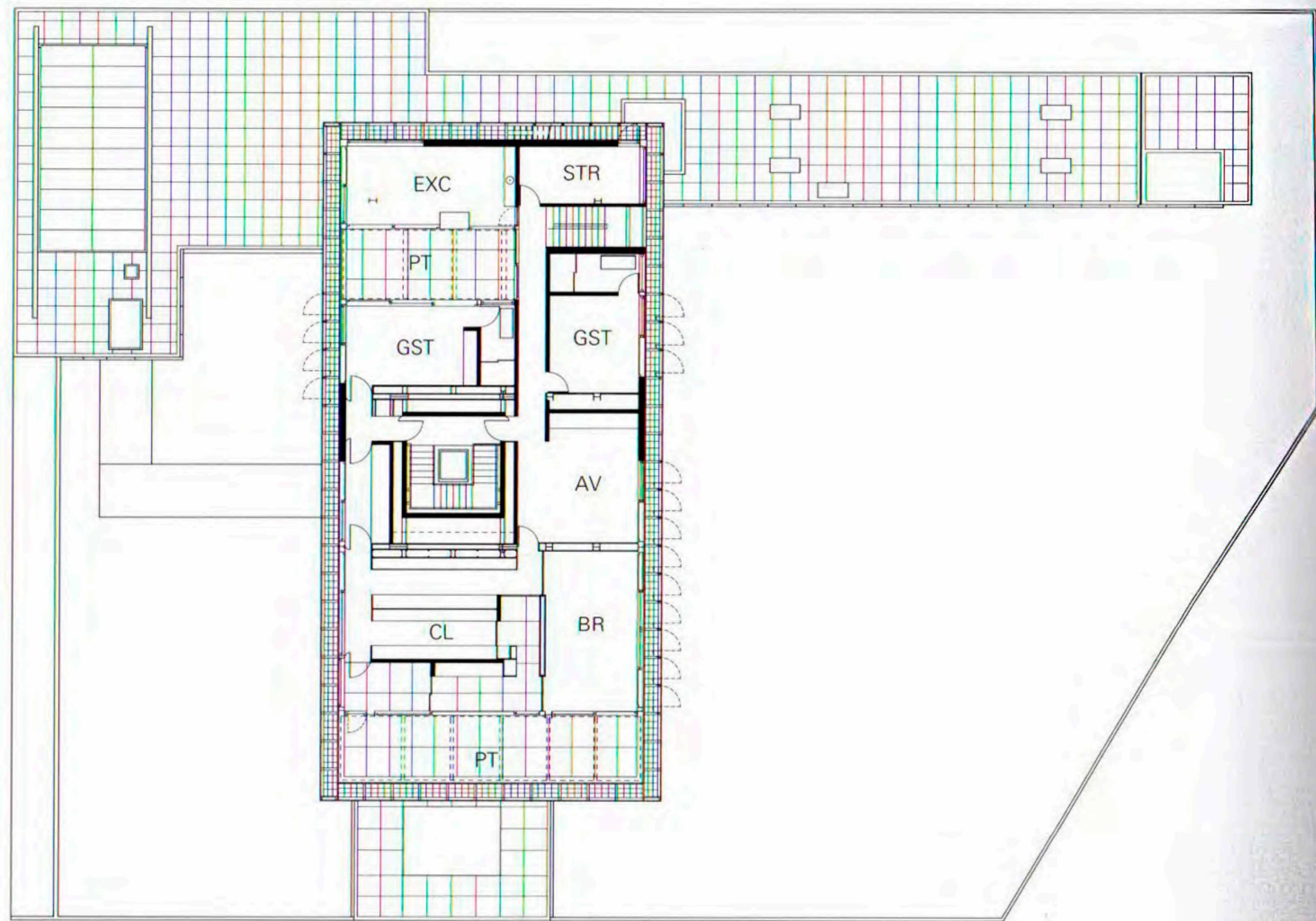
São Paulo, SP, Brazil

Design: 2006–07 Construction: 2008–09

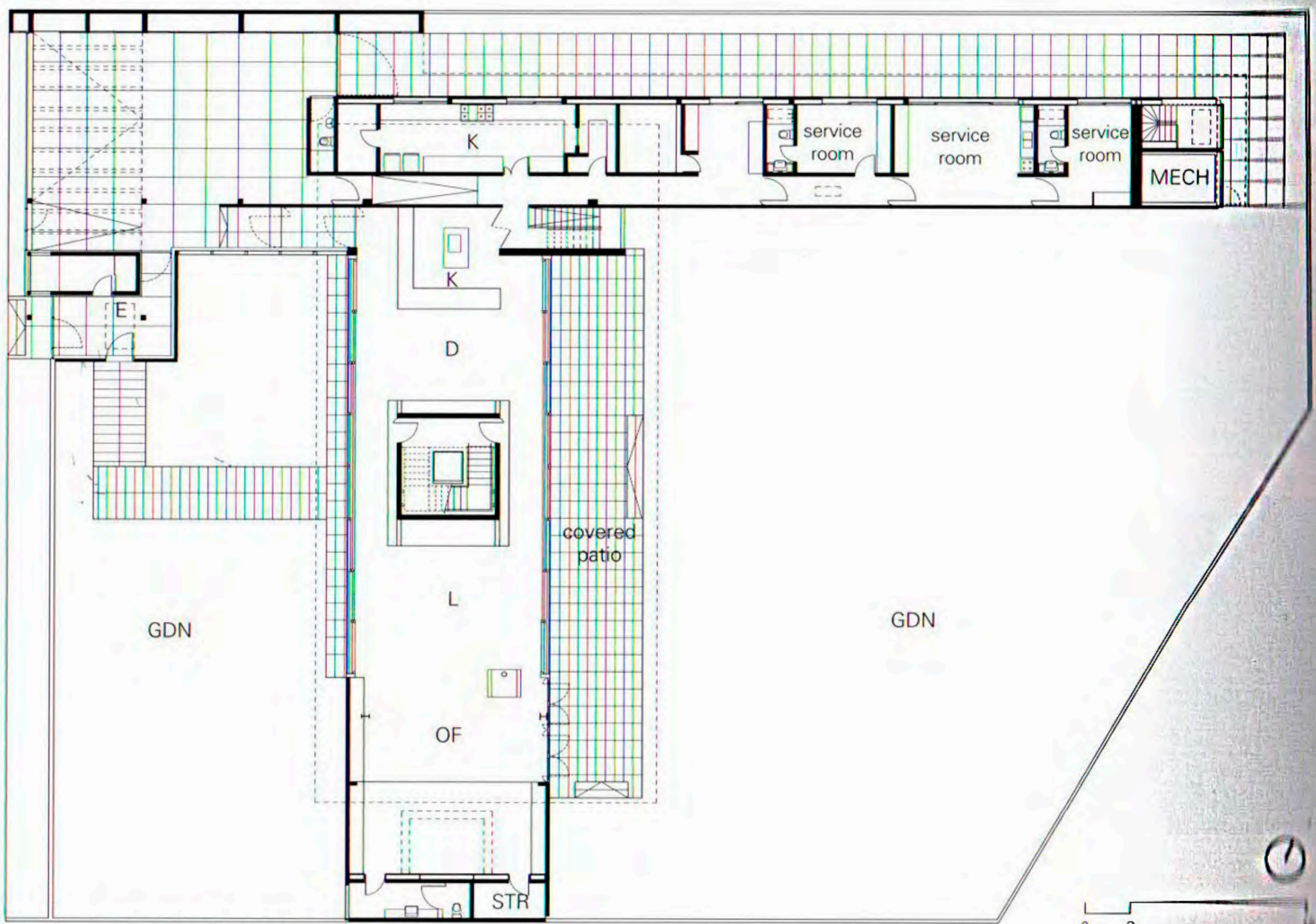




Evening view 夕景



First floor



Ground floor S=1:500

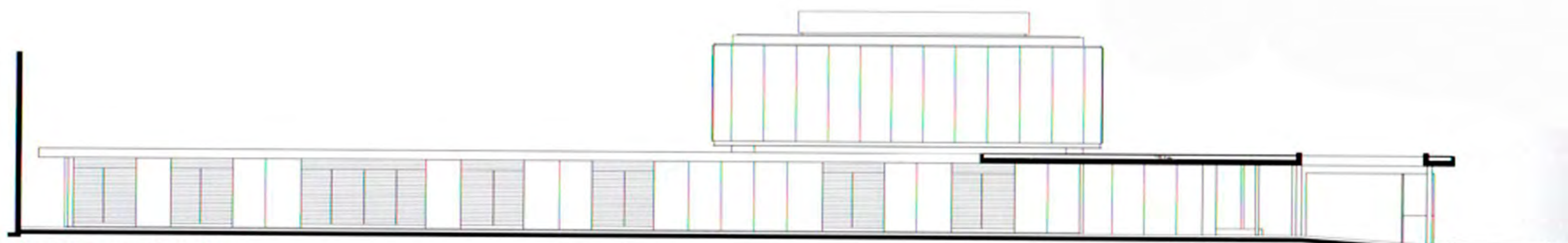
This house, located in a green residential district in the city of São Paulo, takes advantage of its privileged condition, turning its integration with the nature into its distinctive trace. All its spaces maintain a clear relation with the 1,500-square-meter park in which they are inserted.

On the ground floor, the social spaces are located under the shade of the upper volume of the house, connected to the gardens through a terrace and the glass sliding doors—that can be totally moved to the side, creating a 14-meter-opening. The upper volume, conceived as a translucent box, shelters the rooms and other spaces that require greater privacy.

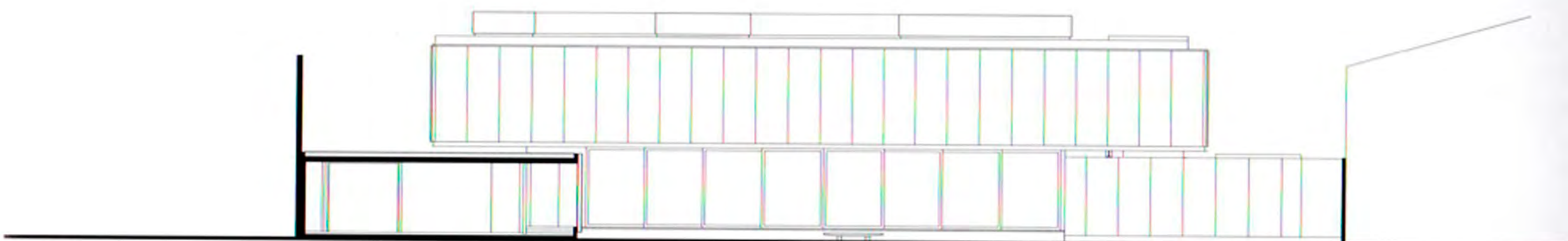
The structure of the glass volume was conceived in such way that it seems to float above the garden, supported by the central pillar made

of reinforced concrete, that also shelters the main staircase to the upper floor. The connection between the horizontal plans and this supporting pillar is strengthened by the creation of voids around the box of concrete, which are also used to bring natural light from the roof to the interior of the house.

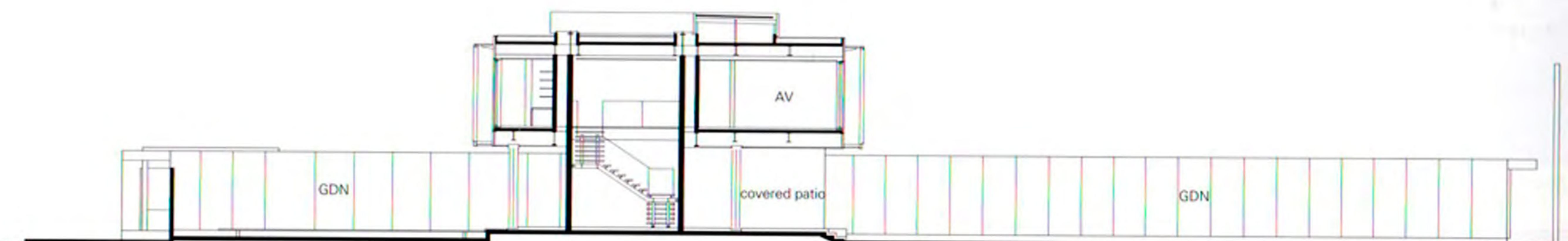
The upper volume is closed by a skin made of silkscreen-printed glass that works as a filter of sunlight. The print that composes the silkscreen works as a reverberation of the image of the park on the surface of the house, strengthening the interdependence between the architectural object and nature.



West elevation S=1:300



South elevation



Cross section S=1:300



Longitudinal section

サンパウロ市の緑豊かな住宅街に建つこの住宅は、その恵まれた立地条件を生かし、自然との繋がりを自らのデザインへ変換させている。住宅内外全ての空間は周りに広がる1,500平米ある公園と明確な関係性を保つ。

1階には、軒となる上部ヴォリュームの下にパブリックスペースが設けられ、テラスや、全開すると14メートル幅の開口になるガラス張りの引き戸を介して庭と繋がっており、引戸は完全に片側に寄せることができる。上部のヴォリュームは半透明の箱としてデザインされ、幾つかの部屋や、よりプライベートな空間を内包する。

このガラスの箱は、建物の中心に位置し上階へと通じる階段を持つRCのコアによって支えることで、庭の上方に浮いているような表現となる。コア周り

にヴォイドを設けることで、主要構造体である柱状のコアと水平に広がる床との視覚的な繋がりが強められ、さらにこのヴォイドは屋根からの光を室内に取り込む。

上部のヴォリュームは全て、日除けのフィルターとして機能するシルクスクリーン・プリントが施されたガラスの表皮で覆われている。プリントされた模様は、公園の表情を住宅の表面に投影させ、自然と建築の共存性を強調している。

Architects: Andrade Morettin Arquitetos—
Marcelo Morettin and Vinicius Andrade, principals-in-charge; Márcio Tanaka, project leader; José Paulo Gouvêa, Marcelo Maia Rosa, Marina Mermelstein, Marten Nefs, Renata Andrulis and Thiago Duarte, project team
Consultants: Companhia de Projetos—
Heloisa Maringoni, structural; Pessoa e Zamaro (building services), mechanical; Isabel Duprat, landscape; Cia. De Iluminação, lighting; AC&D/EuroCentro, windows; Fundament-Ar
General contractor: CPA
Structural system: reinforced concrete, steel
Major materials: concrete, steel, silk screen glass, aluminium windows, wood flooring
Site area: 2,140 m²
Total floor area: 1,364 m²



Evening view from street 通り側夕景



Approach: garden on west アプローチ：西側の庭



Garden on west 1 (left) and living room (right) 西側の庭 (左) と居間 (右)



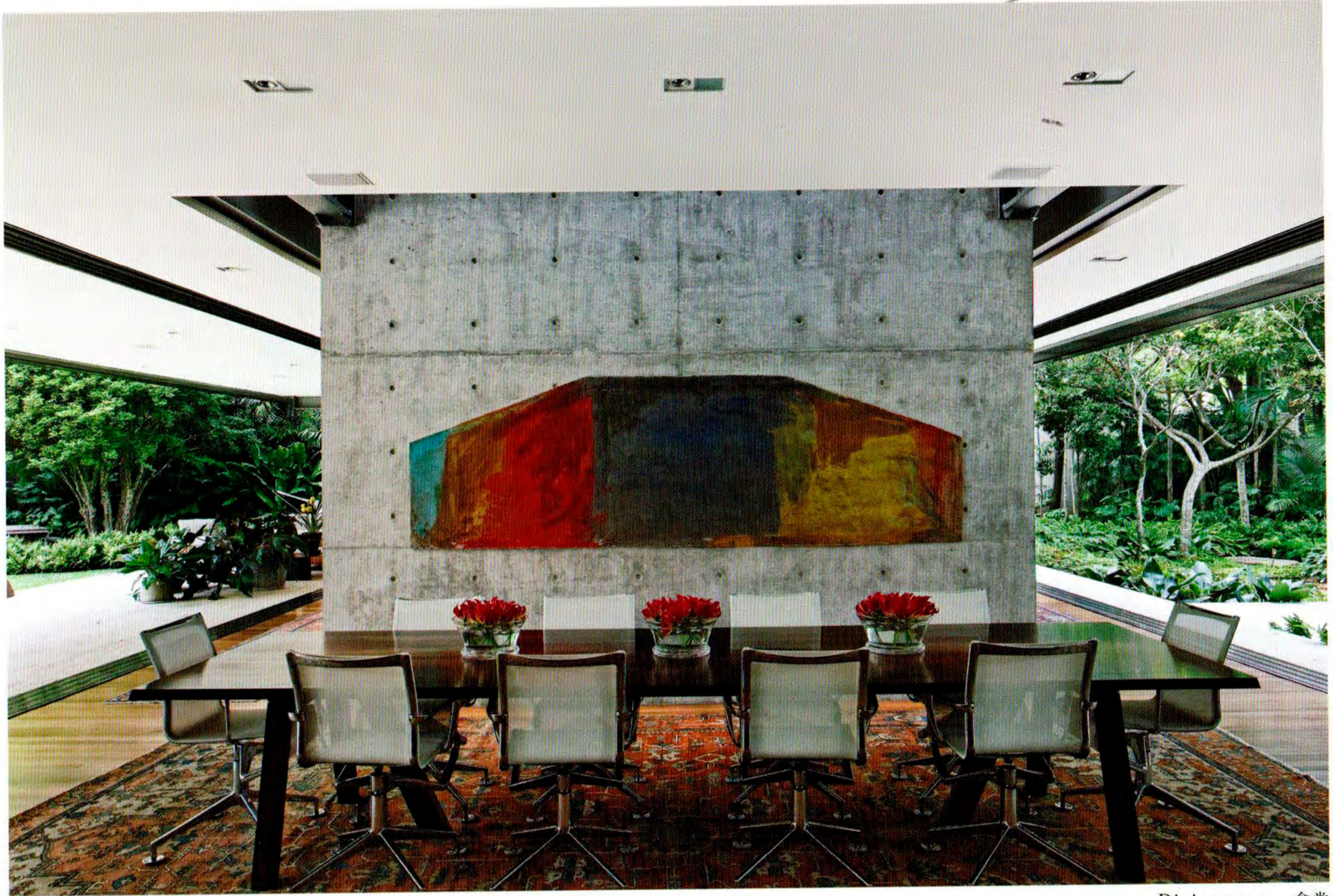
Garden on west 西側の庭



covered patio (left) and living room (right) 屋根のあるパティオ (左) と居間 (右)



オフィス



Dining room 食堂



View of kitchen from dining room 食堂から台所を見る



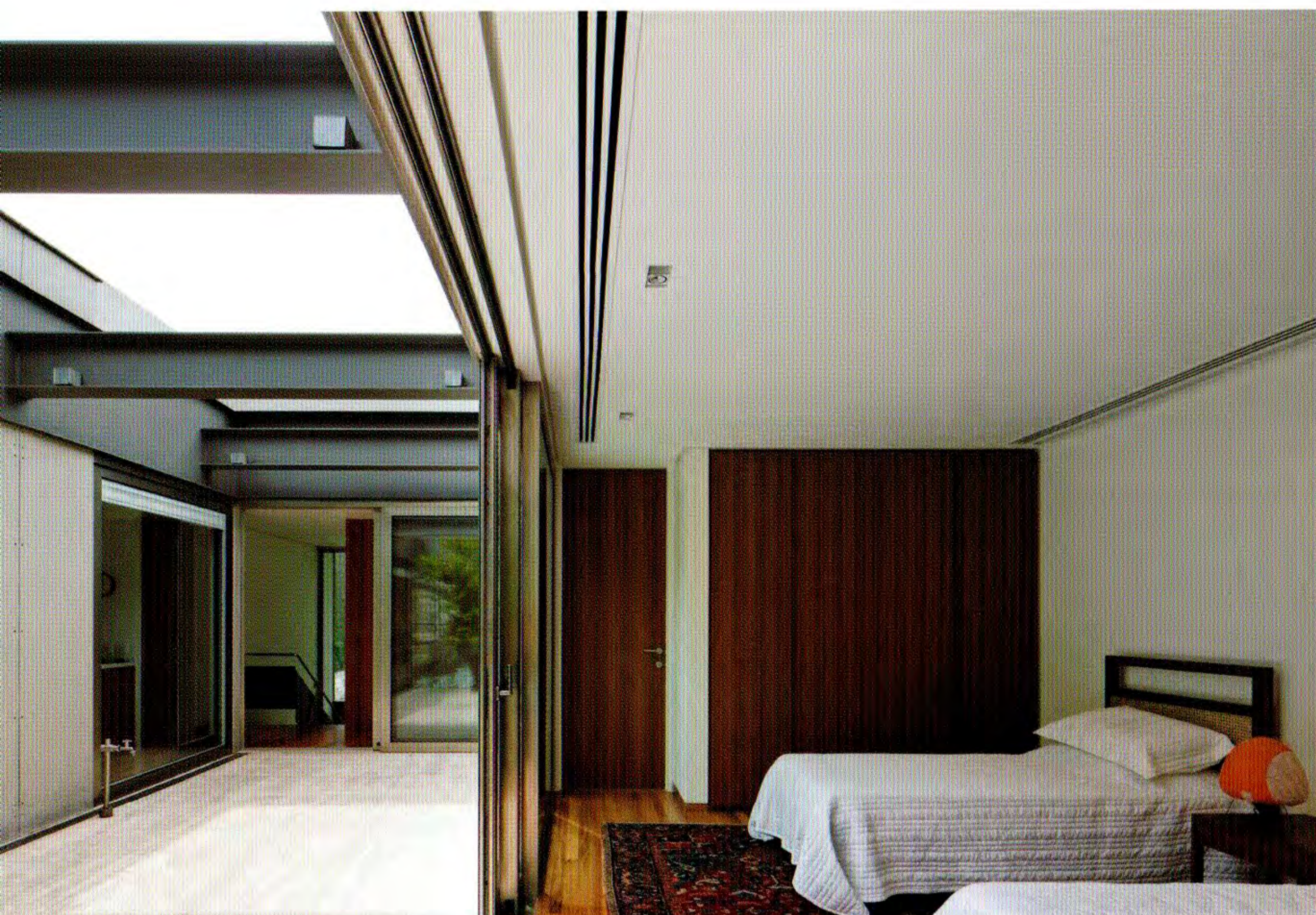
living room: looking north 居間：北を見る



Living room: concrete volume of staircase with skylight
居間：天窓が付いたコンクリート造の階段



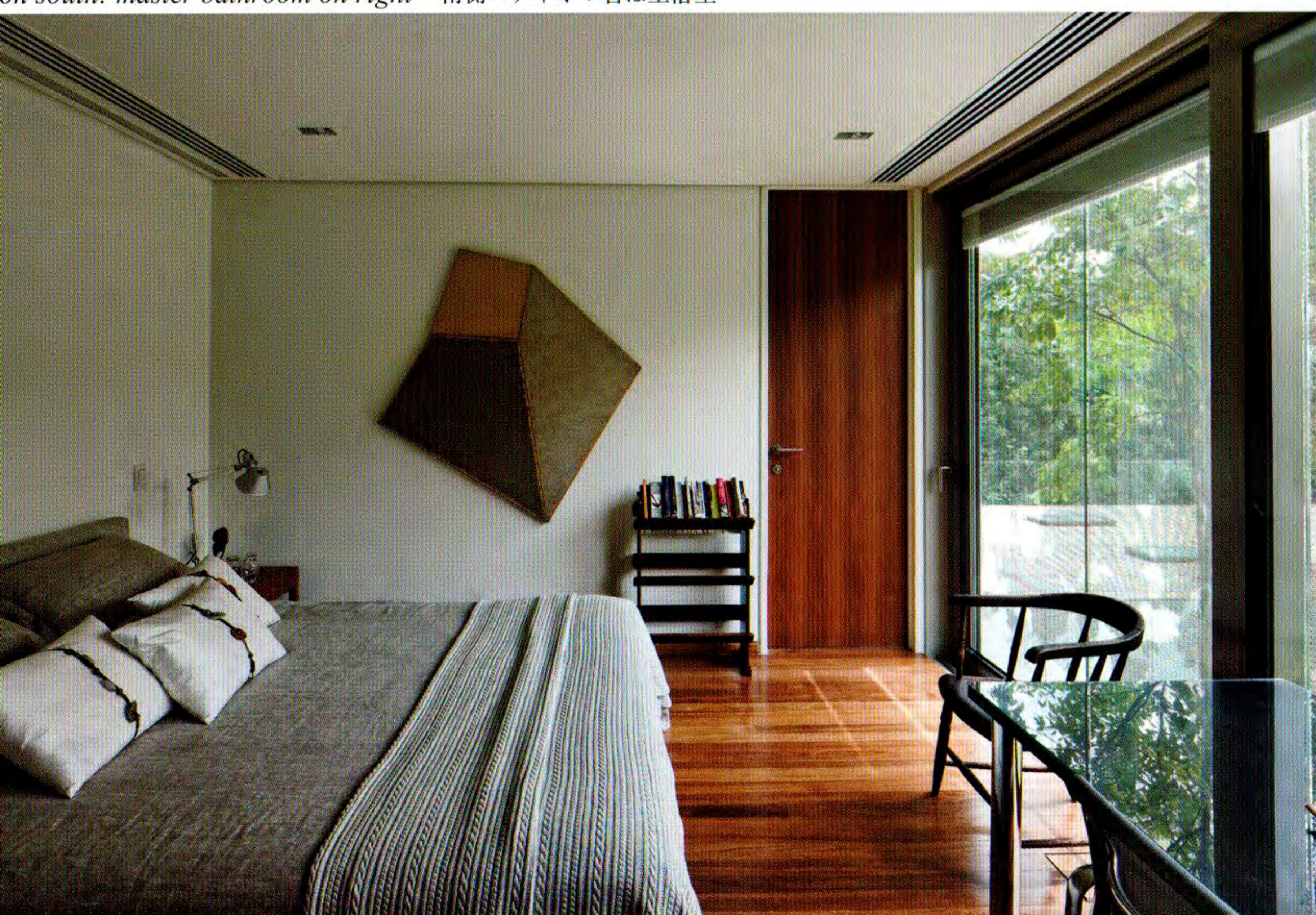
Living room: view toward office behind 居間：後方にあるオフィス側を見



on north (left) and guest bedroom (right) 北側パティオ (左) とゲスト用寝室 (右)



on south: master bathroom on right 南側パティオ：右は主浴室



bedroom ゲスト用寝室



Master bedroom 主寢室



Staircase on north 北側階段室



Bathroom 浴室

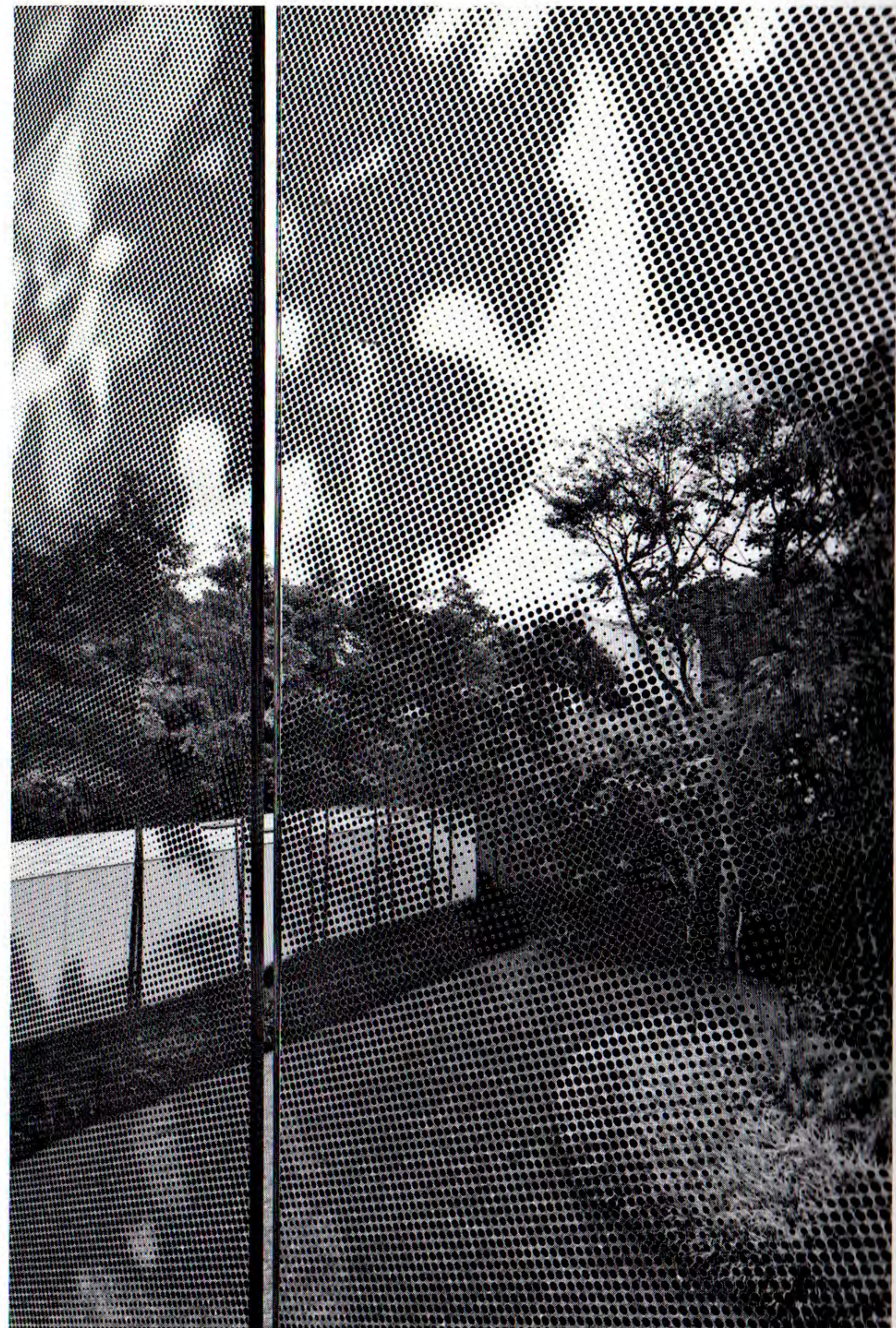


Staircase 階段室

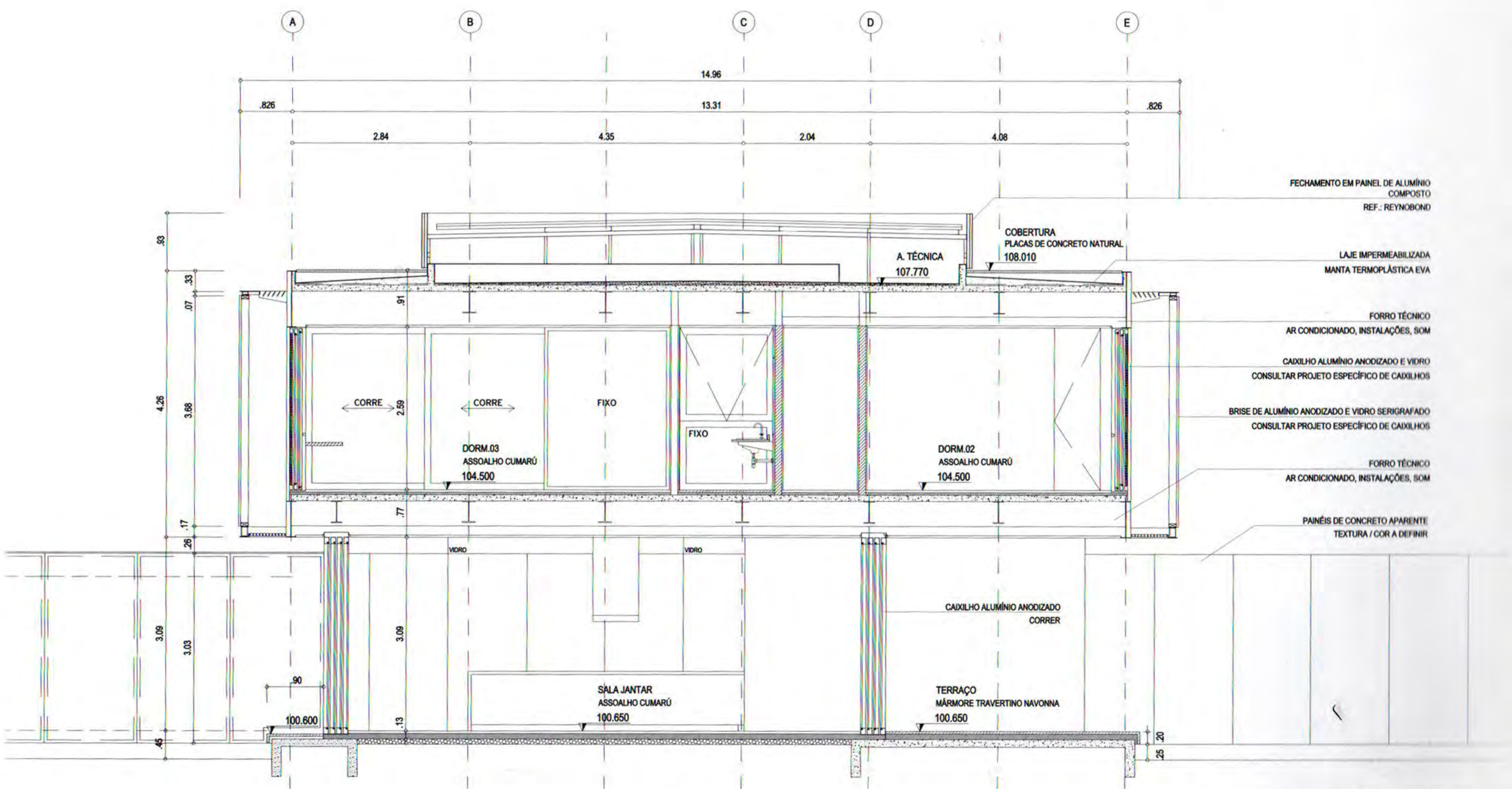




Double skin wall on first floor 2階, ダブル・スキンの壁



Pattern on grazed wall ガラス壁のパターン



Sectional detail S-1:120